

EIS Web for the Kyocera 7135 Smartphone User Manual



Embedded Internet Solutions, Inc. (EIS), makes no warranty of any kind with regard to this material. The information in this document is subject to change without notice. EIS shall not be liable for errors contained herein.

Copyright © 2002 by Embedded Internet Solutions, Inc. All rights reserved.

Embedded Internet Solutions, EIS, EIS Web, and EIS MicroBrowser are registered trademarks of Embedded Internet Solutions, Inc., in the United States of America and other countries. Kyocera 7135 and Kyocera Wireless Corp. are registered trademarks of Kyocera Wireless Corporation in the United States of America and other countries. Other brand or product names are trademarks of their respective holders.

MH82-K5038-5, Rev. 001

Introduction

EIS Web, created by Embedded Internet Solutions, Inc. (EIS) provides full access to the World Wide Web using your Kyocera 7135 smartphone.

In addition to supporting images, 16-bit color, tables, frames, Web links, mailto: links, saving and offline viewing of cached Web pages, downloading and saving files and programs from the Web, creating and editing bookmarks offline, and JavaScript, the full-featured EIS Web also incorporates sophisticated security protection (SSL, HTTPS, and encryption).

In addition, EIS Web gives you the choice of viewing the more streamlined PDA-ready versions of Web pages provided by some content providers or the full versions complete with layout and color graphics as you would see on a desktop computer. While other microbrowsers typically allow *only* Web clipping (truncated, imageless Web pages), EIS Web lets you decide. Note that the default setting of EIS Web is to check for PDA-ready versions before downloading full versions. The default setting may be changed in Browser Preferences on the Options menu by simply unchecking the PDA Content if Available checkbox.

This manual assumes you have already read your Kyocera 7135 smartphone user manual and understand the basic operation of the Palm operating system, associated connection options, and the modem. Please review the user manual if you have not already done so.

Getting Started

Checking your Connection and Network preferences

EIS Web uses the Palm operating system connection and network preferences to connect to the Internet through a modem. The correct preferences must be set before you can use EIS Web to connect to the Internet. You can adjust your network preferences from the Palm OS Applications Launcher (Prefs>Network) or using the Network Preferences shortcut from within EIS Web (select Network Preferences from the Options menu). See the “Connection preferences” and “Network preferences and TCP/IP software” sections of your Kyocera 7135 smartphone user manual for more information.

Launching EIS Web

Once you have confirmed that your network preferences are set correctly, you are ready to explore the Web. Launching EIS Web is easy:

1. On your Kyocera 7135 smartphone, tap the Applications Launcher icon. The Applications Launcher appears. Scroll down to display the Web icon:
2. Tap the Web icon. EIS Web launches and the default homepage appears. Note the green Browser Activity icon indicating that data is being processed.



Connecting to the Internet

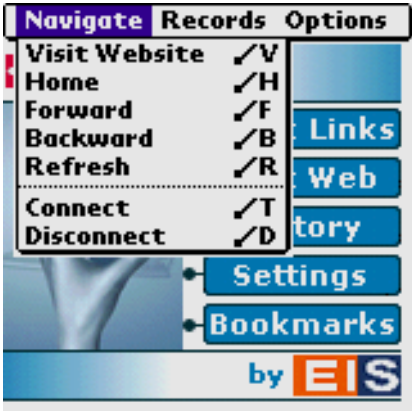
Upon launching, EIS Web checks to see whether you are currently connected to the Internet, but does not automatically connect (nor does it disconnect when you exit). To connect to the Internet, select Connect from the Navigate menu. EIS Web uses your network preferences to make the connection.

Overview of menus and navigation icons

Menus are accessed by tapping the blue EIS Web tab at top left corner of the browser home page or by tapping the Palm OS menu icon in the lower-left corner of the “silk-screened” area at the bottom of the Palm screen. The three menus are Navigate, Records, and Options. Notice that many of the commands in these menus can also be executed with a Graffiti stroke (specified in the menus next to the command), similar to a keyboard shortcut in computer software programs. For example, to add a bookmark using a Graffiti stroke, drag the stylus up and to the right, then draw the symbol for the letter A.

Navigate menu

The Navigate menu lets you go to a specific Web address (Visit Website), return to the home page, go forward or backward, refresh the screen, and connect or disconnect from the Internet.



Records menu



The Records menu lets you add a bookmark for the current Web page, use the Zoom feature, open your list of bookmarks, open the History screen listing the last several Websites you visited, and clear the cache. Zoom takes you directly to the menu choices of the magnifying glass icon on the navigation bar at the top of the screen. The Zoom menu choices allow you to choose among Actual View (full-size display of the Web page with all formatting intact), Wrapping View (layout formatting is discarded and each element of the Web page is lined up along the left side of the screen to eliminate horizontal scrolling), and Miniature View (page is compressed to minimize scrolling).








Options menu

The Options menu allows you to customize browser settings, an optional proxy server setting, the Palm OS network preferences via a shortcut, and a Help screen that identifies the icons on the Navigation bar. Select “About EIS Browser” to view the version number of EIS Web as well as other information about Embedded Internet Solutions.



Navigation bar icons

When menus are not being accessed, seven navigation icons are available in the Navigation bar at the top of each screen. The seven icons are:

- Visit Website 
- Magnifying glass (3 zoom views) 
- Refresh (reload current page) 
- Backward (go back one page) 
- Forward (go forward one page) 
- Home (go to home page) 
- Stop (stop page from loading) 

USING THE BROWSER

Overview

Launching EIS Web automatically views either the default home page or the home page you designated in Browser Settings on the Options menu.

The default home page provides quick links to the Visit Website, History, Browser Settings, and Bookmarks screens.

PDA-ready vs. full versions of Web pages

The default setting is for EIS Web to look first for PDA-ready versions of Web pages, which are streamlined, usually text-only versions provided by some sites, such as Google. This setting may be changed in Options>Browser Settings by unchecking the PDA Content if Available checkbox.



Visiting a specific Web address

1. From the default home page, tap Visit web. Alternatively, tap the Visit Website icon on the Navigation Bar or select Visit Website from the Navigate menu. The Visit Website dialog box appears.



- Let's start with Google, a site that offers a PDA-ready version of its home page. After http://, type the desired URL (Web address) as shown in the following Google example. Do not add any spaces in the Web address. Note that buttons are available to insert common prefixes and suffixes such as www., .com, .org, etc. (tap the button or drop-down menu to insert). URLs are limited to 255 characters.



Option: *Cache This Page* If you wish to preserve a copy of this Web page in memory for offline browsing at a later time, leave the box checked. Otherwise, uncheck the box.

- Tap Go. If you are not already connected, EIS Web will ask if you wish to connect; otherwise EIS Web will download the page specified, in this case the PDA-ready version of the Google home page:



Tip: If you misspelled the URL on the Visit Website dialog box, to avoid retyping the whole URL, go to History (Records>History), select the misspelled URL, correct it, and tap Go.

Visiting a full Web page

Now let's see what the full version of the Google home page looks like, instead of the PDA-ready version. To view the full version of a Web page instead of a PDA-ready version:

- From the Options menu select Browser Settings.
- Uncheck the PDA Content if Available checkbox.

3. Tap OK.

If you are already viewing a PDA-ready version of a Web page, tap the Refresh icon in the Navigation bar to display the full version of the page, as in the Google example. You will notice that EIS Web provides a status of the browser performance by tracking the amount of data, in kilobytes, that is being downloaded. This gives you the ability to tell the difference between when the browser is processing and when your Kyocera 7135 or Internet connection is processing:



Note: The Google logo is not displayed. To speed downloading time, EIS Web is preset to suppress images when downloading a Web page. You can change this in Options>Browser Settings. A second option is to download only a selected image by tapping the image placeholder (indicated by a blue-outlined gray box with a red box in the lower left corner). There may be occasions where you do not have enough memory available to decode a particularly large image file. When this occurs, you will see a small red X in the upper left-hand corner of the image placeholder. Otherwise, tapping the image placeholder downloads that image.

Tip: When downloading a Web page, if you ever want to stop or interrupt the current download, in addition to tapping on the Stop icon from the navigation menu, you can also press the far-left physical button on the Kyocera 7135 (normally used to access the Calendar). If the option Use Scroll Hot Buttons in browser settings has been selected, this button will have been specially programmed so that while EIS Web is running, pressing it stops the current browser activity.



Sometimes a warning icon (red exclamation point) may appear at the top of the screen.

Tapping this icon will display an alert that EIS Web has encountered formatting it cannot display, such as advanced cascading style sheets (which are not supported by EIS Web), or JavaScript if not enabled in Options>Browser Settings (the default setting is Not Enabled). See page 20.

Navigating within a Web page

Several tools help you move around a Web page:

- Up and down physical scroll buttons at lower center of the Kyocera 7135.
- Left and right physical scroll buttons immediately left and right of the vertical scroll buttons. These are the buttons normally used for the Address Book (telephone icon) and To Do List (checklist icon), which have been reprogrammed for EIS Web. They revert to their normal uses when EIS Web is not running or when the Use Scroll Hot Buttons option is unchecked in browser settings. Use them to scroll right or left in increments.
- Right vertical scrollbar (and the up and down arrows at either end).
- Bottom horizontal scrollbar (and its left and right arrows).
- Tap and drag: Touch your stylus to the screen and drag the Web page in the desired direction. Note that if the display is set to Miniature View, touching the screen and dragging will cause the display to return to Actual View. See Using Zoom (the Magnifying Glass icon) on page 11 for more information).

To see the use of the vertical and horizontal scroll buttons in action, let's visit Yahoo!, a page with a lot of content and a complex layout. Here's the Yahoo! home page in 100% view (Actual view):



Tapping the down scroll button two or three times moves us down the page to the games section.

Tapping the right scroll button moves us to the right, column by column, so we can see another section entirely, such as Entertainment. Note the placeholder for a picture. The two scroll bars indicate the current position on the page.

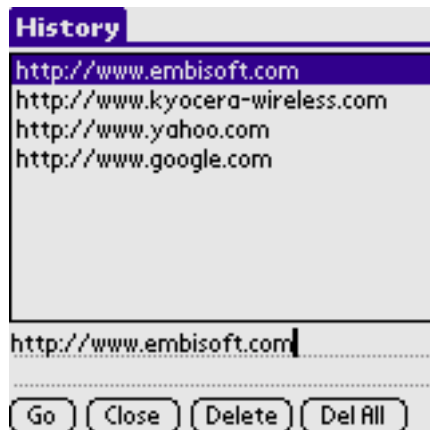
Experiment with these tools to see which is more effective on a given Web page.



Using the History command

1. From the home page, tap History (or from the Records menu, select History). A list of recently visited Websites is displayed in reverse chronological order; the most recent site visited is highlighted.

You may go to any site or delete one or all of the URLs listed:



- *Go to a previously visited Website*-To return to any Website on the list, tap the URL to select it, and then tap Go. If you visited the site during the current session, the cached Web page will be displayed. If this is a new session, EIS Web will download a fresh copy of the page.
- *Delete URLs* To delete one URL, tap to select it, and then tap Delete. To delete all URLs, tap Del All.

Tip: Use the up and down scroll buttons to navigate through the History list.

2. To exit, tap Close.

Using Zoom (the Magnifying Glass icon)

There are three ways (“views”) to display Web pages in EIS Web: Actual View, Wrapping View, and Miniature View. The view is selected by tapping the Magnifying Glass (Zoom) icon on the Navigation bar or selecting Zoom from the Records menu):

Also, the far-right button above the keypad on your Kyocera 7135 smartphone, which is usually pressed to access the EIS Web browser functions as a view switcher while EIS Web is running. Pressing this button in sequence toggles between the Actual, Wrapping, and Miniature views.

Actual View displays a Web page at “actual size” or “Zoomed In,” with the full layout of the page as shown in this example of the Google home page.



Selecting Wrapping View (set as the default in Options>Browser Settings) discards layout formatting and wraps all content along the left margin.



If you select Miniature View, the Web page shrinks, allowing you to see more of the page layout at a glance while still be able to read some of the text.

If you scroll the page in any view and then switch to a different view, the browser preserves your position on the page. In addition, when in Miniature View, tapping any portion of the page causes the page to enlarge that part of the page (the dimensions indicated by a blackened area upon tapping) to the 100% view. A handy strategy is to display a page in Miniature View, scroll to the part of the page you wish to access, and then tap the screen to enlarge it to Actual View.

Tip: As already mentioned, navigating around a particular page is generally easiest in Miniature View. And to avoid horizontal scrolling (which facilitates one-handed navigation and browsing) the Wrapping View would be ideal. However, the Actual View is the best view if you are trying to use particular elements of a Web page (other than surfing links). For example, if you are trying to interact with Website content by viewing a form, looking up information in a table, or making a transaction, your best bet is to use the Actual View which will render the content as it was originally intended to be displayed.

Using Bookmarks

Bookmarks are accessed from the home page link or the Records menu. With bookmarks, as well as with all other features of EIS Web involving URLs or Web page names such as History, Proxy, or Visit Website, there is a 255-character limit for URLs and a 40-character limit for Web page names.

Adding a bookmark

1. While viewing a Web page, from the Records menu select Add to Bookmarks. The Edit Bookmark screen appears:
2. The title of the Web page has been inserted under Name. You can modify the name if you like using normal Graffiti tools or by tapping out the characters on the soft keyboard.
3. Tap OK to create the bookmark, which will now appear on the list of bookmarks, and also the Web page in the cache. The cached page, preserved along with the title and URL, is displayed whenever the bookmark is used.



Using an existing bookmark

1. From the home page or Records menu, tap or select Bookmarks. A list of the names of existing bookmarks appears (note that the URL, or Web address, is displayed below):
2. Select the desired bookmark's name by tapping it.
3. Tap Go. EIS Web displays the cached Web page. To update, tap Refresh.



Tip: Use the up and down scroll buttons to navigate through the bookmarks.

Deleting a bookmark

1. From the Records menu, select Bookmarks. The list of bookmarks appears as shown above.
2. Tap the bookmark name to select it and then tap Edit.
3. Tap Delete. A confirmation screen appears:
4. Tap Delete.



Editing a bookmark

1. From the home page or Records menu, tap or select Bookmarks. The list of bookmark names appears as shown above.
2. Tap the bookmark you wish to change and then tap Edit. The Edit Bookmark screen appears.
3. Make desired changes to the name or address.
4. Tap OK.



The screenshot shows the 'Edit Bookmark' dialog box. The title bar is purple with the text 'Edit Bookmark' in white. The dialog has a light gray background. It contains the following fields and controls:

- Name:** A text field containing 'Google'.
- Address:** A text field containing 'http://www.google.com'.
- Address Editor:** A segmented control with three segments: 'http://', 'www.', and '.com'.
- Others:** A dropdown menu showing '.org'.
- Category:** A dropdown menu showing 'Unfiled'.
- Buttons:** Four buttons at the bottom: 'OK', 'Cancel', 'Clear', and 'Delete'.

Creating a new bookmark

1. From the home page or Records menu, tap or select Bookmarks. The list of bookmarks appears as shown above.
2. Tap New. A blank Edit Bookmark screen appears:
3. Enter a name for the bookmark.



The screenshot shows the 'Edit Bookmark' dialog box in a blank state. The title bar is purple with the text 'Edit Bookmark' in white. The dialog has a light gray background. It contains the following fields and controls:

- Name:** An empty text field.
- Address:** A text field containing 'http://'.
- Address Editor:** A segmented control with three segments: 'http://', 'www.', and '.com'.
- Others:** A dropdown menu showing '.org'.
- Category:** A dropdown menu showing 'Unfiled'.
- Buttons:** Three buttons at the bottom: 'OK', 'Cancel', and 'Clear'.

4. Enter the address (URL) of the Website. Note that buttons are available to insert prefixes and suffixes. Be sure to include “http://”. Here’s an example:
5. Tap OK. The new bookmark appears at the top of the list.

Downloading a file or program from the Web

Download a file the same as you would with a Web browser on a desktop or laptop computer. EIS Web supports downloading Palm OS applications (.prc files), MP3 audio files, Windows executable programs (.exe), compressed files (.zip), Palm OS database files (.pdb), and Palm Web clipping applications (.pqa). The browser automatically installs the Palm programs. To store and play downloaded MP3 audio files, you must have installed an optional memory card and MP3 player software on your Kyocera 7135 smartphone.

Disconnecting from the Internet

When you wish to disconnect from the Internet, you can continue to use EIS Web to view cached [saved] Web pages) offline, as discussed below. From the Navigate menu, select Disconnect. EIS Web immediately disconnects.

About the cache and viewing cached (“saved”) pages offline

EIS Web’s cache function preserves a copy of a Web page in memory for later retrieval.

Cache features

- With Visit Website, you have the option to “Cache this Page”. If you check the box, a faster-loading cached copy of the page will be available if you return to the page during the same session using the Back button or History. To see updated content, tap Refresh once the cached page is loaded.

- Cached Web pages are also available for offline browsing as long as you don't completely exit EIS Web. To access a cached page, select the URL in History and tap Go without first reconnecting.
- Bookmarking a page automatically creates a cached version, and whether connected or not, EIS Web takes you to the cached page when you tap Go after highlighting a bookmark. To see updated content, tap Refresh.
- When you disconnect EIS Web from the Internet (without exiting the browser), all cached pages are preserved in memory for use with Visit Website, History, and Bookmarks. Exiting EIS Web automatically clears the cache except for the History list (names and URLs are preserved but not cached pages) and the cached pages corresponding to bookmarks. Thus bookmarked Web pages are available for offline retrieval, even after exiting EIS Web.
- After exiting EIS Web, relaunch the browser and then use History or Visit Website. EIS Web will ask you if you wish to reconnect to the Internet in order to download a fresh version of the page. If you choose a bookmarked page, EIS Web will retrieve the cached page only. To see an updated version of a bookmarked page, tap Refresh while viewing the cached page. If you are not currently connected to the Internet, EIS Web will ask if you wish to connect.

Reconnecting to the Internet

From the Navigate menu select Connect. The browser uses your network preferences to reconnect to the Internet.

Exiting EIS Web

Tap the Palm Applications launcher button on the silk-screened area below the display screen. EIS Web closes. Note that merely exiting EIS Web does not disconnect you from the Internet. If you wish to disconnect as well, select Disconnect from the Navigate menu before you exit EIS Web.

Changing Settings

1. From the home page tap Settings or from the Options menu, select Browser Settings.



The Settings dialog box opens.



By default, Default Wrapping View and PDA Content if Available are checked. To set a different home page from the default, check the box at Custom Homepage by tapping it. The Enter URL screen appears.



Enter the desired URL (Web address) for the new home page and tap OK. For example:

The address will be inserted into the Custom home page URL.

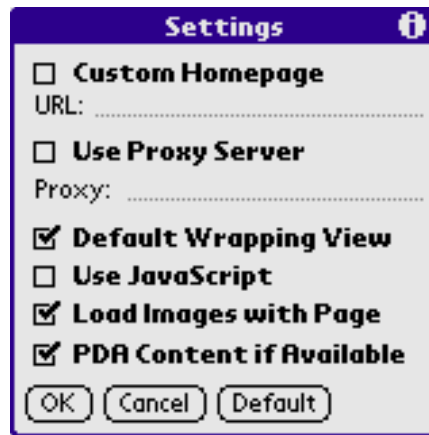
You may use your Palm application buttons for shortcuts or 'hot buttons' for use while browsing. If you check this option, the silver keys on your Kyocera 7135 smartphone that are used to launch your calendar, phone book, to do lists, and memo applications can be customized only while you are using the browser application. These buttons may be set to correspond with stop, scroll left, scroll right, and switch between views.

The Default Wrapping View loads Web page content along the left margin, one element at a time. If you wish the full layout to be the default, uncheck this box by tapping it.

To enable JavaScript features on Web pages, check the Use JavaScript box.

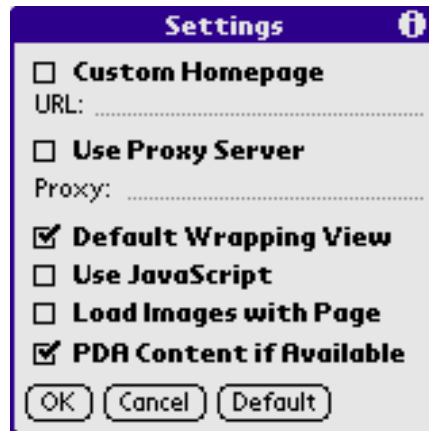
To activate downloading images on Web pages, check the Load Images with Page box. Note that this will slow downloading of Web pages.

When images are suppressed by default you can still download images by tapping the image placeholder. If the browser accepts the image for download, it will fill the image placeholder completely while it is downloading. If you see the red X in the upper left corner of the screen, the image cannot be decoded at this time due to memory or network limitations.



The final checkbox instructs EIS Web to Download PDA content if Available.

Leaving this box checked (the default) causes EIS Web to first check to determine if the Website offers a text-only "PDA-ready" version of its content designed specially for PDAs such as your Kyocera 7135. If a PDA-ready version is available, it will be downloaded instead of the full Web page. While viewing the PDA-ready version, you can change to the full version by unchecking this box, tapping OK, and then tapping the Refresh icon in the Navigation bar.



2. Tap OK. (If you wish to exit without saving changes, tap Cancel; to reset the Settings to the defaults, tap Default.)

3. If you access the Internet from a private network, you may have to use a proxy server to access the Internet. From the Options menu, select Proxy Settings.

Contact your network administrator for the proxy name. Check the Use Proxy Server box, then enter the Proxy name on the Enter URL dialog box, and tap OK. Here is an example. Yours will be different unless you happen to attend this particular university.



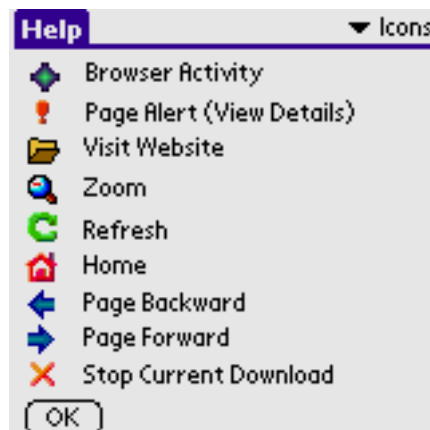
Getting Information

For information about EIS Web and Embedded Internet Solutions, from the Options menu select About EIS Web.

Getting Help

Help option

For help with icons and other EIS Web features, from the Options menu, select Help. A screen identifying all icons appears.



Tapping the drop-down menu at upper right provides additional choices, each leading to additional Help information.



Frequently Asked Questions (FAQs)

Why can't I connect to my wireless data network?

- Start by checking your Connection and Network preferences from within EIS Web using Options>Network Preferences.
- If your preferences appear to be set properly, exit EIS Web by tapping the Applications Launcher icon in the silk-screened area of your Kyocera 7135 and attempt to connect using Network Preferences directly from the Palm OS (go to Prefs>Network and then tap the Connect button). Once you have reestablished a network connection, relaunch EIS Web and try visiting a Web page.
- If you were unable to establish a network connection outside of EIS Web, your wireless signal may be too weak and you will have to wait until you reach a location with better wireless coverage.
- See the “Connection preferences” and “Network preferences and TCP/IP software” sections in your Kyocera 7135 user manual for additional troubleshooting tips.

What is a “PPP timeout error”?

If you are trying to establish a network connection and you receive a “PPP timeout error” message, this is coming from the Palm OS, not from EIS Web. The message indicates that the Kyocera 7135 was unable to log on to your wireless service provider in its attempt to connect to the Internet. If your network settings are correct (see “Why can't I connect to my wireless data network” above), you may need to contact your wireless service provider.

Can I also access the Internet from a landline connection or must I use a wireless connection?

EIS Web doesn't care what kind of modem connection you use, so you can run the program with a landline connection or using the Kyocera 7135 with its built-in wireless modem. You can select a different modem (or a different ISP) in Options>Network Preferences.

Why don't images load with Web pages?

The default EIS Web setting is to suppress images when downloading Web pages in order to improve download speed. This can be changed in Options>Browser Settings. You can also download images on the fly by tapping the image placeholder (see page 8, or Settings on page 20). If images download incompletely, tap the Refresh icon in the Navigation bar.

Why doesn't the Web page look the same as it does on my PC?

If you are in Actual View mode with JavaScript enabled, the PDA Content box unchecked, and the Load Images with Page box checked, the content should match very closely what you would see using a desktop or laptop computer Web browser. On Web pages employing cascading style sheets, Macromedia Flash, or other enhanced Web features not supported by EIS Web, you may see some differences. Enabling PDA Content, disabling the JavaScript and Loading Images with Page options, and/or using a view other than Actual View will all affect the way Web pages appear in EIS Web.

What's the difference between the alert messages "This page cannot be found" and "This page cannot be opened?"

- "This page cannot be found" means that EIS Web had a problem looking up or retrieving the IP address of the Web page you requested. The best bet is to try again (after verifying that you have a good connection and a strong enough wireless signal). If you know it, you can try entering the IP address of the Website in place of the URL on the Visit Website screen.
- "This page cannot be opened" indicates that EIS Web successfully found the Web page you requested but was unable to download all the content on the page. This may result from a network stability issue that can be solved by refreshing or revisiting the page (again, verify that you have a good connection and strong-enough wireless signal).

What is "PDA Content" (Options>Browser Settings)?

Some Website content providers, such as Google, offer PDA-specific, PDA-optimized versions of their Web pages generally with simplified layouts and few or no graphics. When the "Download PDA Content" box in Options>Browser Settings is checked (the default), EIS Web will first look for a PDA content version of the Web page and download it. Otherwise, it will download the full Web page.

Why are there times when I am not able to sign on to an SSL-enabled Website?

Many times, Web pages with SSL sign-in procedures require SSL support in combination with JavaScript for a submission process. While both features are supported by EIS Web (make sure that JavaScript has been enabled in your browser settings), your Kyocera 7135 smartphone may not have enough dynamic system memory to support both features at the same time, depending on the page requirements. In these cases, EIS Web will automatically disable JavaScript to preserve memory and prevent the system from crashing. If you are unable to sign on, try exiting the browser, relaunching, loading the page again.

Why are there times when it looks like the screens and text are overlapping?

Each time a page or menu changes, the Palm operating system updates the background screen. Unfortunately, if the Palm operating system memory is low, some visual overlap will be seen.

Product feedback

To send us feedback, please come visit us at the Embedded Internet Solutions (EIS) Website: <http://www.embisoft.com>

Glossary

beaming Transferring files or programs via the infrared ports on two Kyocera 7135 smartphones or other Palm devices (or between a Palm handheld and an infrared-enabled desktop or laptop computer).

bookmark A saved Web address (URL) that permits convenient navigation to a Website.

browser Software program enabling a user to access the World Wide Web and the Internet by interpreting and rendering Web pages formatted with HTML. Examples of popular desktop computer Web browsers are Microsoft Internet Explorer and Netscape Navigator. See also *microbrowser*.

cache Collection of saved files or Web pages that can be accessible for offline viewing.

cached page The contents of an entire Web page saved in memory for offline access.

Cascading style sheets (CSS) Advanced scripting and/or formatting on Web pages.

encryption Scrambling a file for security protection; the file can only be unscrambled with the proper encryption key.

Graffiti A shorthand method for data entry into a Palm handheld device.

handheld See *PDA*.

history List of previously visited Web pages in a browsing session.

home page The first page of a Website, typically containing a welcome, information about the Website, and navigation hyperlinks to the rest of the site. Also, a user-specified Web page that appears when a browser is launched.

HTML (HyperText Markup Language) A way of marking up text and graphics with formatting tags to create Web pages for the Internet that will be interpreted with a Web browser.

HTTP (HyperText Transfer Protocol) Typical beginning of a World Wide Web address, for example, <http://www.embisoft.com>.

.....

HTTPS (HyperText Transfer Protocol over Secure Socket Layer) Special secure version of the HyperText Transfer Protocol that allows encryption of Web pages to permit secure Internet transactions, such as ordering products over the Web or online banking.

hyperlink On the Web (and in other interactive environments), a way of moving from an image or bit of text on one Web page to another Web page, to a specific spot on that Web page, or to a different location on the present Web page. Clicking or tapping the link with a mouse, stylus, or other pointing device takes you to the linked page or spot on a page.

Internet A worldwide network of computer networks that enables users anywhere in the world to quickly and conveniently communicate with one another through electronic mail (email) and to access information on the World Wide Web, which is a major sector of the Internet. Also called “the Net.”

ISP (Internet Service Provider) A company providing Internet access to its subscribers.

memory card A separate piece of hardware that when inserted into a Palm handheld MMC slot increases the amount of available memory.

microbrowser A miniaturized version of a Web browser designed to run on personal digital assistants (PDAs) and other devices. An example is EIS Web. See also *browser*.

modem A device that converts signals between digital and analog to permit computer access to the Internet wirelessly or via a cable.

Net Short for Internet (see).

PDA (Personal Digital Assistant) Tiny handheld computer typically providing an electronic calendar, address book, to-do list, and memo pad, but also capable of running a variety of miniature word processing, spreadsheet, travel, organizer, financial, Web surfing, and other applications. Examples are devices running the Palm and Windows CE operating systems.

PDA-ready content Simplified versions of Websites, usually created by the Website author, optimized for PDAs, other types of handheld devices, and small-screen viewing.

PPP (point-to-point protocol) A protocol for communication between the network connection for the Web browser and your ISP.

proxy A server that acts as an intermediary between a browser and the Internet in order to facilitate security, caching, or other administrative controls.

SSL (Secure Sockets Layer) A way for Internet browsers to encrypt Web pages on the Internet for security purposes.

URL (Uniform Resource Locator) A unique address on the Internet for identifying Web pages, email addresses, and the like. For example: www.amazon.com; thomasr@homenet.com

Web Short for World Wide Web (see).

Web clipping Simplified versions of selected Web pages downloaded by special software programs to a PDA.

Web page Individual file located on the World Wide Web that contains some combination of text, graphics, sound, and video and is marked up with HTML tags. Each page has its own unique Web address (URL) so it can be accessed by users anywhere in the world. Several related Web pages are called a Website.

Website A group of Web pages maintained as an interrelated unit.

WEP (Wired Equivalent Privacy) A wireless data privacy standard.

World Wide Web A sector of the Internet consisting of HTML-formatted Web pages that may contain text, graphics, sound, video, and hyperlinks.