

The Kyocera MP3 Player

Your Kyocera MP3 Player allows you to download and play audio files on your Kyocera 7135 smartphone.

MP3 Player version 1.0 supports MP3 files that meet the following specifications:

- Format: MP3 (MPEG-1 Audio Layer 3)
- Sampling frequency: 44 kHz or below
- File Extension: mp3

You need the following to play MP3 format audio files on your Kyocera smartphone:

- MP3 Player version 1.0 (pre-installed on your Kyocera smartphone)
- Kyocera Loader Windows application for transferring files from your PC to your Kyocera smartphone.
- Secure Digital (SD) card or a Multimedia card (MMC) to play audio files on your Kyocera smartphone.

Installing Audio Software

Before installing the Kyocera Loader Windows application, make sure your computer meets the following requirements listed below.

System Requirements

- PC/AT-Compatible computer
- CPU: Pentium® 233 MHz or higher
- Hard disk drive space: 60 MB or more
- RAM: 64 MB or higher
- CD-ROM drive
- USB port or available RS-232 Com port
- Operating System: Windows® 98/Windows® 98 Second Edition/Windows® Me, Windows NT® 4.0/Windows® 2000 Professional
- Display: High (16 bit) Color or better and resolution: 800 x 600 pixels or higher

Note: The following environments are not supported: Windows® 95, Windows® XP

Installing the Kyocera Loader Windows Application

This section is TBD

Transferring audio files from your computer to your Kyocera smartphone

Preparing your Kyocera smartphone and placing it in the cradle

1. Insert a Secure Digital card or a Multimedia Card into the expansion slot on your Kyocera smartphone.
2. On the Palm Launcher screen, tap on the Downloader icon.
3. Place your Kyocera smartphone in the cradle.
4. Press the Connect button.

Transferring MP3 format audio files to your Kyocera smartphone

After preparing your Kyocera smartphone and placing it in the cradle, you can download MP3 format audio files from your computer to your Kyocera smartphone. To transfer audio files from your computer to your Kyocera smartphone:

1. On your computer, launch the Kyocera Loader Windows Application. The songs currently on your Kyocera smartphone should be displayed in the lower pane.
2. Add the MP3 Audio file that you wish to transfer to your Kyocera smartphone by dragging and dropping from the upper Explorer-style pane to the lower pane
- or -
dragging and dropping from Windows Explorer directly to the lower pane
- or -
copying and pasting the files.
3. Once you have added all of the files you wish to transfer to your Kyocera smartphone, order the songs using the Up and Down buttons.
4. Press the Copy To Device button to transfer your files to your Kyocera smartphone,.

Troubleshooting

The lower left corner of the status bar should say **Connected**. If the lower left corner of the status bar says **Not Connected**:

Make sure that the Palm application **Downloader** is running and that you have pressed the **Connect** button.

Make sure your Kyocera smartphone is fully inserted into the cradle.

On the PC Loader application, select the **Tools ' Options** to make sure the communications type matches the type of cradle you own. If the **Use HotSync Default** box is checked, make sure you can perform a **HotSync** operation, then run this application again.

If the lower left corner of the status bar says **No Media**: install a compatible **Secure Digital** card or **MMC** in the expansion slot on your Kyocera smartphone.

Playing Audio Files on your Kyocera smartphone

Once you have transferred the MP3 files to you Kyocera smartphone, play the songs by tapping on the **MP3 Player** icon on your phone's **Launcher** screen.



Kyocera MP3 Player Palm Application

The Kyocera MP3 Player Palm Application contains three main screens.

- JukeBox
- PlayList
- Downloader

It also contains three secondary screens:

- Sound
- Song Info
- About MP3 Player

Main Screens

The upper-right corner of each main screen offers three options: JukeBox, Playlist, and Downloader. Use your stylus to select a screen.

Menu

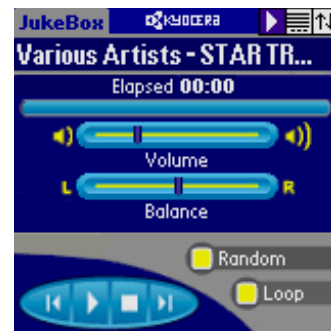
These menu options are available on all three main screens:

- **JukeBox** – Play songs that you have downloaded to your smartphone.
- **PlayList** – Organize your songs.
- **Downloader** – Download music to your smartphone.
- **Sound...** – Adjust volume, balance, bass and treble.
- **Song Info...** – Display the name of the song and the recording artist.
- **About MP3 Player...** – Display basic information on your Kyocera MP3 Player.

JukeBox

The JukeBox screen controls the MP3 Player.

- **Song Title** – Shows the current song's title. If the song title is too long to fit on the screen, the text will scroll by while the song is playing.
- **Elapsed/Remaining** – Shows how much time has elapsed for the current song. Tap on the number field to show the remaining time of the current song.
- **Song Progress Bar** – Graphically shows the progress of the current playing song.
- **Volume** – Sets the volume.



- **Balance** – Sets the headphone balance.
- **Random** – If checked, the songs in the PlayList will be played in random order.
- **Loop** – If checked, the player will play all songs in the list over and over. When it reaches the end of the PlayList, it will restart at the beginning.
- **Player Control Buttons:**
 - **Previous Song/Rewind** – Press within the first three seconds of a song to return to the previous song on the playlist. If pressed after the first three seconds have elapsed, the current song will start again from the beginning.
 - **Play/Pause** – Press the play button to play the current song. While the song is playing, the button changes to a pause button. Press the pause button to stop the song from playing. Pause can also be used to mute the volume.
 - **Stop** – Stops the player.
 - **Next Song** – Press Next Song to advance to the next song in the PlayList.

PlayList Screen

The PlayList screen is used to view all of the MP3 songs on your Kyocera smartphone's media card. You can activate or deactivate songs and view additional song information.

Menu

The PlayList form contains additional menu items that are not available to the other Main forms:



Edit Menu

- **Select All** – Activates all songs in the PlayList.
- **Select None** – Deactivates all songs in the PlayList.

Items on this screen include:

- **Total Play Time** – Shows the total play duration of the currently active songs.
- **Active Checkbox** – If checked, the song is included in the PlayList. If not checked, the song is skipped when the player plays the PlayList.
- **Song Title** – Shows the title of the Song.

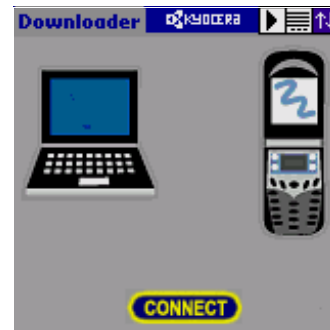
- **Playing Indicator** – The playing indicator will flash on the right side of the currently playing song.
- **Song Info** – Displays Song Information for the selected song.
- **Delete** – Permanently deletes a song from your Kyocera smartphone's media card.
- **Player Control Buttons** – These are the same as the JukeBox Player control buttons.

Downloader Screen

The Downloader screen is used to transfer MP3 files from your computer to your Kyocera smartphone.

Form Items

- **Connect Button** – Tap to connect to your computer.
- **Status Display** – After tapping Connect, the connection status will be displayed.



Other Screens

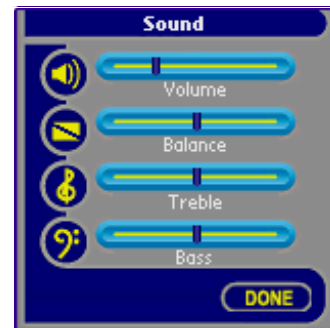
Sound

The Sound Form is used to adjust the sound settings on your Kyocera smartphone, including volume, balance, bass, and treble.

Song Info

Song information may include:

- **Title** – Title of the song
- **Artist** – Artist who performed the song.
- **Album** – Album the song was recorded from.
- **Length** – Length of the song.
- **Kbps** – Kilo-bits-per-second setting used to record MP3 song.
- **KHz** – Sampling rate used to record this MP3 song.
- **Year** – Year the song was released.
- **Genre** – Genre of this song, such as pop, country, soul, or rhythm and blues.
- **Website** – Website where song originated.



About MP3 Player

The About MP3 Player screen tells the user about the software.

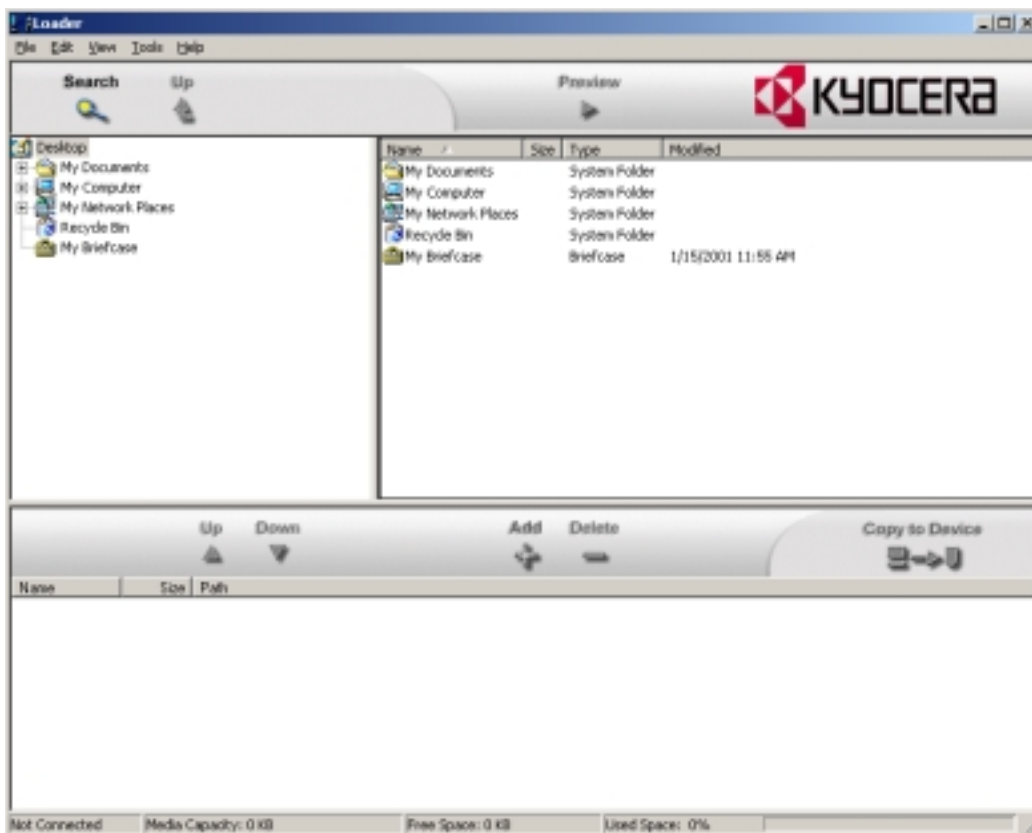
- ***Demo Button*** – Tap this button to play a demo MP3 file that is included with your Kyocera smartphone.
- ***Done*** – Returns to the previous menu.



Kyocera Loader Windows Application

This section describes the features of the Kyocera Loader Windows application. The application is divided into four parts:

- Menu
- Upper Pane
- Lower Pane
- Status Bar



Menu

File Menu

- **Add** – Shortcut key: Ctrl+B. Adds the selected file(s) from the Upper Pane's list view to the Lower Pane's list view. Same as pressing the Add button on the Lower Pane's toolbar, drag/drop or copy/paste from the Upper Pane's list view to the Lower Pane's list view.
- **Delete** – Shortcut key: Del. Deletes the selected file(s) from the Lower Pane's list view. If the file resides on the Phone, it is permanently deleted from the phone. If the file resides on the hard drive, it is only removed from the Lower Pane's list view.
- **Play** – Shortcut key: Ctrl+P. Plays the currently selected MP3 file(s) from the Upper Pane's list view with the default MP3 player installed on your computer.
- **Copy To Device** – Shortcut key: Ctrl+T. Transfers the files from the Lower Pane's list view to the Kyocera smartphone, if they do not already reside on the Phone. Also transfers the PlayList order information to the phone.
- **Properties** – Shows the properties dialog for the selected file(s) in the Lower Pane's list view.
- **Exit** – Exits this application.

Edit Menu

- **Copy** – Shortcut key: Ctrl+C. Copies the selected file(s) from the Upper Pane's list view and places them in the clipboard.
- **Paste** – Shortcut key: Ctrl+V. Pastes the files contained in the clipboard, if present, to the Lower Pane's list view.
- **Move Up** – Shortcut key: Ctrl+Up arrow. Moves the selected file(s) in the Lower Pane's list view up one position in the PlayList.
- **Move Down** – Shortcut key: Ctrl+Down arrow. Moves the selected file(s) in the Lower Pane's list view down one position in the PlayList.
- **Select All** – Shortcut key: Ctrl+A. Selects all of the files contained in the active list view.

View Menu

- **Status Bar** – Shows or hides the status bar for this application.
- **Refresh** – Shortcut key: F5. Refreshes the Upper pane to reflect the actual contents of this computer.

Tools Menu

- **Options...** – Displays the phone communication options for the application.
- **Search** – Brings up the standard Explorer-style Search window. You can search for files on your computer, then drag and drop or copy/paste them to the Lower Pane. Same as pressing the Search button.

Help Menu

- **Contents** – Shortcut key: F1. Displays the help file for this application.
- **About Loader...** – Displays the About box for this application.

Upper Pane

The upper pane includes a toolbar and an Explorer-style view of your computer's hard drive.

Upper Pane Toolbar

The toolbar contains buttons to allow you to do the following functions:

- **Search** – Brings up the standard Explorer-style Search window. You can search for files on your computer, then drag and drop or copy/paste them to the Lower Pane.
- **Up** – Move the Tree view and the list view's current folder up one directory level.
- **Preview** – Launches the selected MP3 File(s) with the default MP3 player on your computer. If more than one MP3 files are selected, the default MP3 player is called with each file. Most MP3 players will start playing the first song and add the other songs to its PlayList. This functionality is dependant on the MP3 player you use.

Upper Pane Explorer View

The left side of the Explorer view is a tree view that shows all of the folders on your computer. You can expand the folders to see child folder, or you can select a folder to see its contents displayed on the right.

The right side is a list view that shows the contents of the folder selected on the tree view. The columns shown in the list view are:

- **Name** – Name of the file
- **Size** – Size of the file
- **Type** – Type of file that is associated on this computer.
- **Modified** – Date and time the file was last modified.

With the list view you can perform the following actions:

- Drag from this window to the lower pane
- Copy from this window and paste to the lower pane.
- Right click on the file(s) you wish to add to the lower pane and select the 'Add To Phone' menu option.

Context Menu

Right clicking on one or more MP3 files will show a context menu. There are three additions to the standard Windows context menu:

- **Add To Phone** – Adds the selected file(s) to the Lower pane's list view
- **Play with Default Player** – Plays the selected file(s) with this computer's default MP3 player.
- **Properties** – Shows an additional tab containing Song Information for each song selected.

Lower Pane

The lower pane consists of a toolbar and a list view.

Lower Pane Toolbar

The toolbar contains buttons to allow you to do the following functions:

- **Up** – Moves the file(s) selected in the list view up one position in the PlayList.
- **Down** – Moves the file(s) selected in the list view down one position in the PlayList.
- **Add** – Duplicates the selected file(s) from the Upper Pane's list view to the lower pane's list view. The file(s) present in the lower pane will be transferred to the smartphone the next time the 'Copy To Device' button is pressed.
- **Delete** – Deletes the selected file(s) from the lower pane. If the file resides on the Phone, it is permanently deleted from the Phone. If the file resides on your computer, it is only removed from the list of files to be transferred to the phone.
- **Copy To Device** – Copies any files that were added to the Lower Pane's list view to the Phone. It also transfers the current PlayList position information to the Phone. The PlayList position can be modified by using the Up and Down button, explained above.

Lower Pane List View

The List View contains a list of the files on your Kyocera smartphone and the files that will be transferred to your Kyocera smartphone the next time the 'Copy To Device' button is pressed.

The columns shown in the list view are:

- **Name** – Name of the file
- **Size** – size of the file
- **Path** – If the file resides on the Phone, this field shows the PlayList index (zero based). If the file resides on the hard drive, this field shows the full path of the file.

Context Menu

Right clicking on one or more MP3 files will show a context menu. There are three additions to the standard Windows context menu:

- **Delete** – Deletes the selected file(s) from the list view. Same as pressing the 'Delete' toolbar button.
- **Select All** – Selects all of the files contained in the list view.
- **Properties** – Shows an additional tab containing Song Information for each song selected.

Status Bar

The status bar shows information about the connection with and the media on your Kyocera smartphone. The following information is shown:

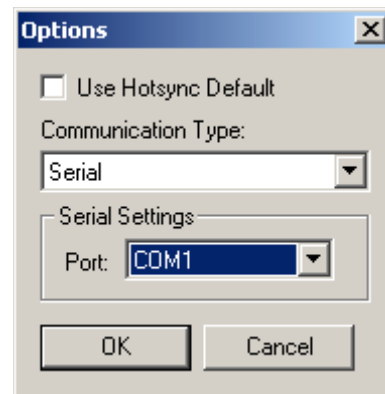
- **Connection Status** – This field shows the current connection status between this application and your Kyocera smartphone. If they are not connected properly, this field will show 'Not Connected'. In order to connect properly, your Kyocera smartphone must be placed in its cradle and the cradle must be properly connected to your computer. You must also run the Downloader Palm Application from your Kyocera smartphone. Once a connection is established, this area of the status bar will show 'Connected'. If the Phone is connected properly, but contains no media, this area of the status bar will show 'No Media'.
- **Media Capacity** – Shows the overall capacity of the media card installed on your Kyocera smartphone in kilobytes.
- **Free Space** – Shows the number of kilobytes available on the media card in your Kyocera smartphone.
- **Used Space** – Shows the percentage of space that is unavailable on the media card in your Kyocera smartphone.

Options Dialog

The default communications options for this application are the same as your HotSync settings. If you wish to use different settings or do not have HotSync installed on your computer, use the Options Dialog to manually set the communications settings.

The Dialog contains the following items:

- **Use HotSync Default** – Check box that specifies which communications settings to use. If checked, this application uses HotSync settings.
- **Communication Type** – Click on the down arrow to specify what type of communications port (USB or serial [RS-232]) you will be using to communicate with the smartphone.
- **Serial Settings** – Only enabled if Serial is chosen in Communication Type. Sets the serial port to use to communicate with the Phone.



MP3 Properties

Right-click on an MP3 file on your computer and select Properties, you will see the following additional property page. The properties page includes the following:

- **File name** – Including extension of the song. You can change the name of the file, by replacing the text with the desired file name.
- **Title** – Song Title contained within the MP3 File. You can change the song title by replacing the text with the desired song title.
- **Artist** – Artist contained within the MP3 File. You can change the artist name by replacing the text with the desired artist name.
- **Album** – Album contained within the MP3 File. You can change the album by replacing the text with the desired album.
- **Comment** – Comment contained within the MP3 File. You can change the comment by replacing the text with the desired comment.
- **Length** – Length of the MP3 song in minutes and seconds.
- **kbps** – Bits per second of the MP3 song.
- **kHz** – Frequency of the MP3 song.
- **Year** – Year that the MP3 Song was created.
- **Track** – Track number from the original CD that this MP3 file was created from.
- **Genre** – Genre of this MP3 song.
- **Website** – Website for this MP3 song.

