

KYOCERA KR1 MOBILE ROUTER FIRMWARE UPDATE PROCEDURE



Performing Your Firmware Update

This procedure provides specific steps required to update your Kyocera KR1 Mobile Router firmware.

Note: This procedure does not cover firmware recovery issues. For additional technical support information, please visit the D-Link website at <http://support.dlink.com>, or call D-Link at (888) 351-5353.

1. To download the latest firmware available for your Kyocera KR1 Mobile Router, navigate to the following site:
<http://www.kyocera-wireless.com/kr1-router/support.htm>.

2. Select the **support** tab, and then select **firmware update**.

Note: All firmware file links are not depicted in the graphic below.
Available firmware versions will be listed at this site as applicable.

Kyocera KR1 Mobile Router
KR1

overview where to buy accessories **support**

main **firmware update**

FIRMWARE UPDATE:
Obtain latest firmware upgrade and installation instructions for the KR1 Mobile Router through the links provided below.

DOWNLOADS:

- [KR1 Mobile Router Firmware Version 1.00 \(3.17MB\)](#)
- [KR1 Mobile Router Firmware Upgrade Guide \(PDF, 360KB\)](#)

For additional technical support information, [visit the D-Link website](#) or call D-Link at (888) 351-5353.

Having difficulty viewing these documents?
Right mouse click on the file and save it to your desktop. Then, open the file from your desktop.

3. Within the **DOWNLOADS:** section, check for the latest firmware file available, and save it to your computer.



The screenshot shows the Kyocera KR1 Mobile Router support page. At the top, there are navigation tabs for 'overview', 'where to buy', 'accessories', and 'support'. Below these, there are sub-tabs for 'main' and 'firmware update'. The 'firmware update' section is active, displaying the heading 'FIRMWARE UPDATE:' followed by instructions to obtain the latest firmware upgrade and installation instructions. Below this, there is a 'DOWNLOADS:' section with two links: 'KR1 Mobile Router Firmware Version 1.00 (3.17MB)' and 'KR1 Mobile Router Firmware Upgrade Guide (PDF, 360KB)'. A note at the bottom of the screenshot suggests using a right mouse click to save files to the desktop if there are difficulties viewing them. To the right of the text, there are two images of the Kyocera KR1 Mobile Router, one from a top-down perspective and one from a side-front perspective.

4. Insert the Ethernet patch cable into **LAN PORT 1** on the back of your Kyocera KR1 Mobile Router, and an available Ethernet port on the network adapter in the computer you will use to configure the unit.

Caution: Do not attempt the firmware update using a WLAN (WiFi) connection.

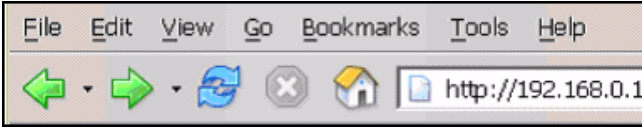
Caution: Remove your 1xEV-DO card, and disconnect any other USB phone connection *before* proceeding.



5. Connect the power adapter to the receptor on the back panel of your Kyocera KR1 Mobile Router. Then plug the other end of the power adapter into a wall outlet or power strip.



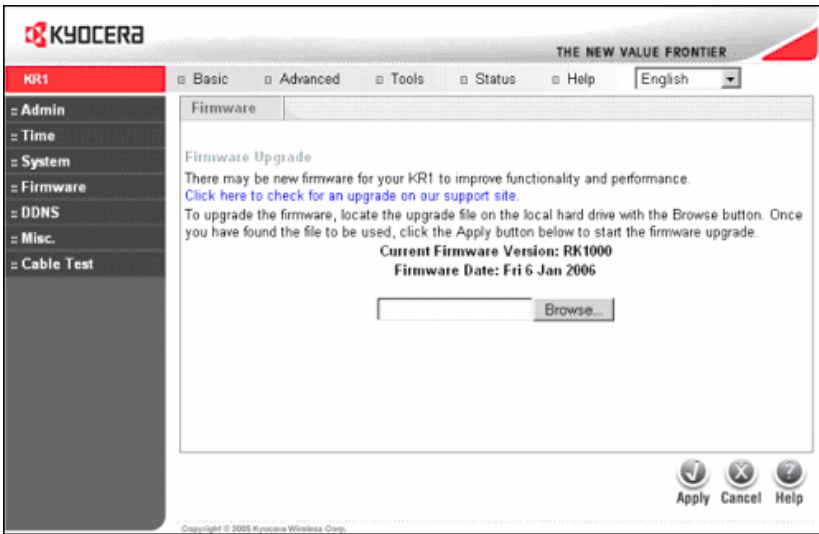
- a. The **Power LED** will turn **ON** (light green) to indicate power has been applied.
 - b. Other LEDs will flash **ON** and **OFF** as your Kyocera KR1 Mobile Router performs initialization and Internet connection processes. This will take a few minutes.
 - c. When complete, the following LEDs will illuminate green: **Power**, **WLAN**, and **LAN Port 1** (or your specific LAN Port connection).
6. Launch a browser and navigate to the default Kyocera KR1 Mobile Router GUI: **http://192.168.0.1**.



7. Login to your Kyocera KR1 Mobile Router GUI. The username is **admin**. Leave the password blank.



8. Select the **Tools** tab from the top menu bar. Select the **Firmware** menu option located on the left side column.



9. Click the **Browse** button to locate the latest firmware file (.bix file). Open the selected firmware file, and click **Apply** to initiate the firmware update.

Caution: Please *do not click* either the **Apply**, **Cancel**, or **Help** button, once the firmware update process has started. Doing so will disrupt the process, and may result in unit malfunction.

10. The firmware update process will take five to ten minutes. The process is complete when the **WLAN LED** blinks green.

