

2011/6/10

Ver1.0.0

Kyocera USB Driver

[sy21_setup.msi installer]

(Common for SCP-3200, SCP-6650, SCP-7050, SCP-2500,
SCP-8500, SCP-PRO200, SCP-PRO700, SCP-3800, SCP-6750,
SCP-2700, SCP-6760, SCP-3810, SCP-6780, SCP-3820, E-4100,
S3015, SCP-PRO820 and SCP-PRO720)

Installation/Uninstallation Procedure

Contents

[1. Installation Procedure](#)

[2. Uninstallation Procedure](#)

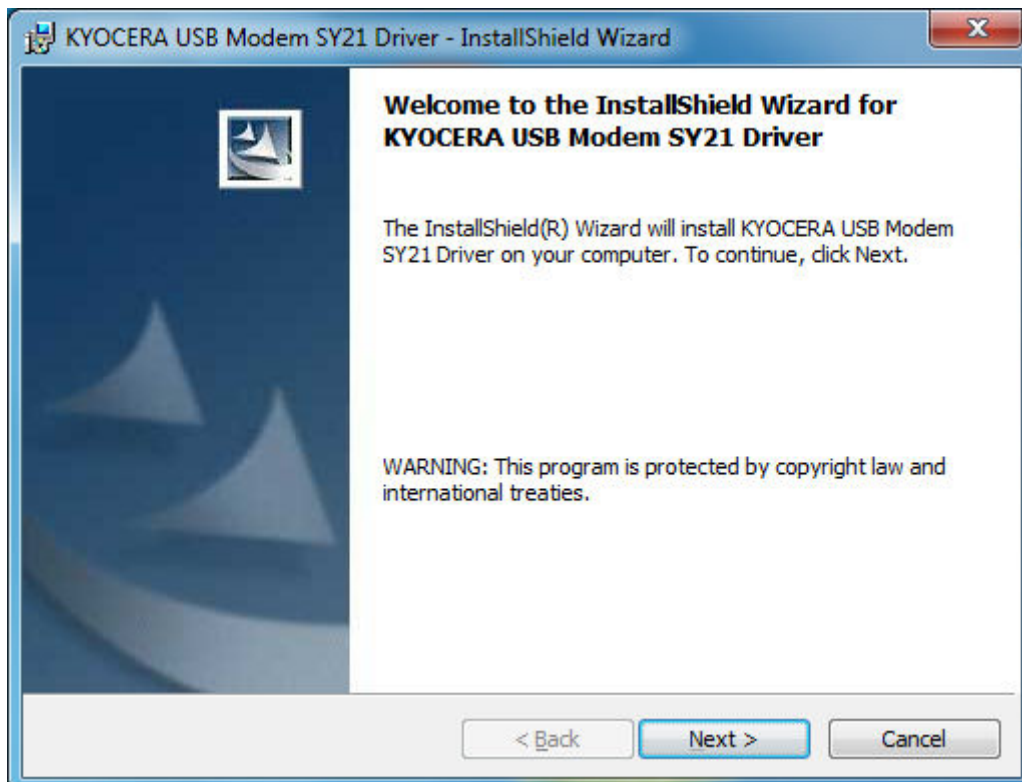
[3. Attention](#)

*The messages described in this manual are based on WINDOWS 7 x64 SP1.
Therefore, the messages may be not coincident with some devices.

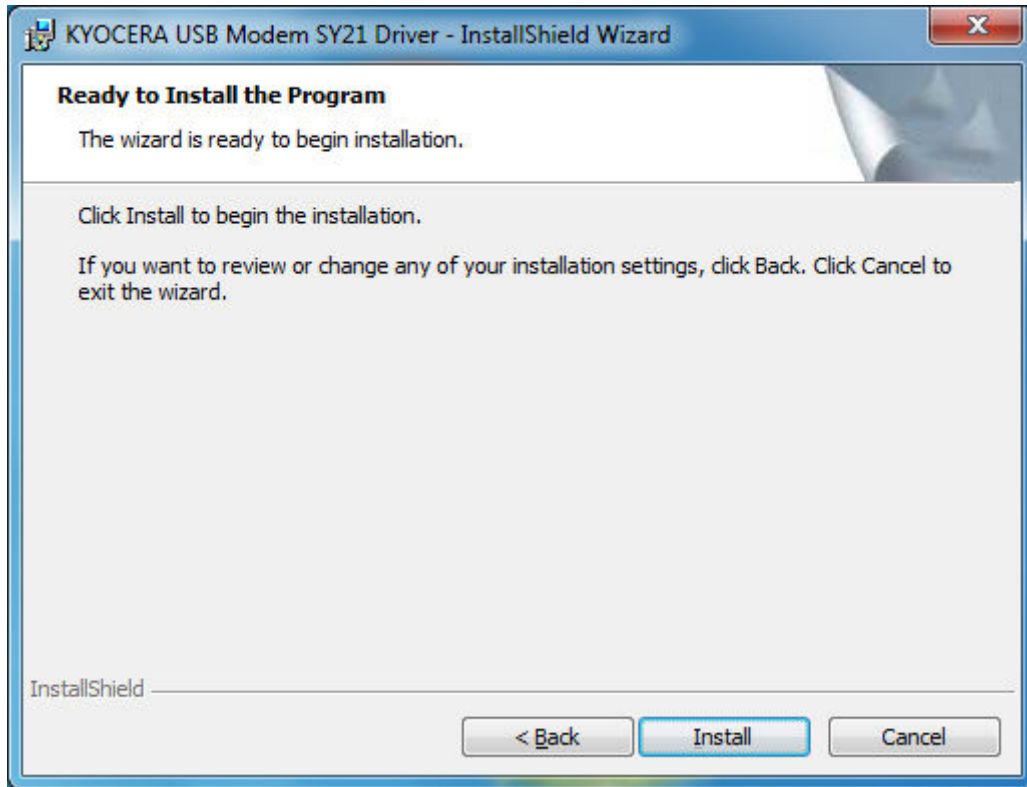
Copyright (c)2011 Kyocera Corporation.

1. Installation Procedure

- A) Disconnect the handset from USB port on the PC.
- B) Press sy21_setup.msi
 - *NOTE: if any of sy21 (SCP-3200, SCP-6650, SCP-7050, SCP-2500, SCP-8500, SCP-PRO200, SCP-PRO700, SCP-3800, SCP-6750, SCP-2700, SCP-6760, SCP-3810, SCP-6780, E4100, S3015, PRO-820 and PRO-720) USB driver is already installed, these must be uninstalled. Please follow "[2. Uninstall Procedure](#)".
- C) Install Driver dialog will be launched, and then press [Next] button.

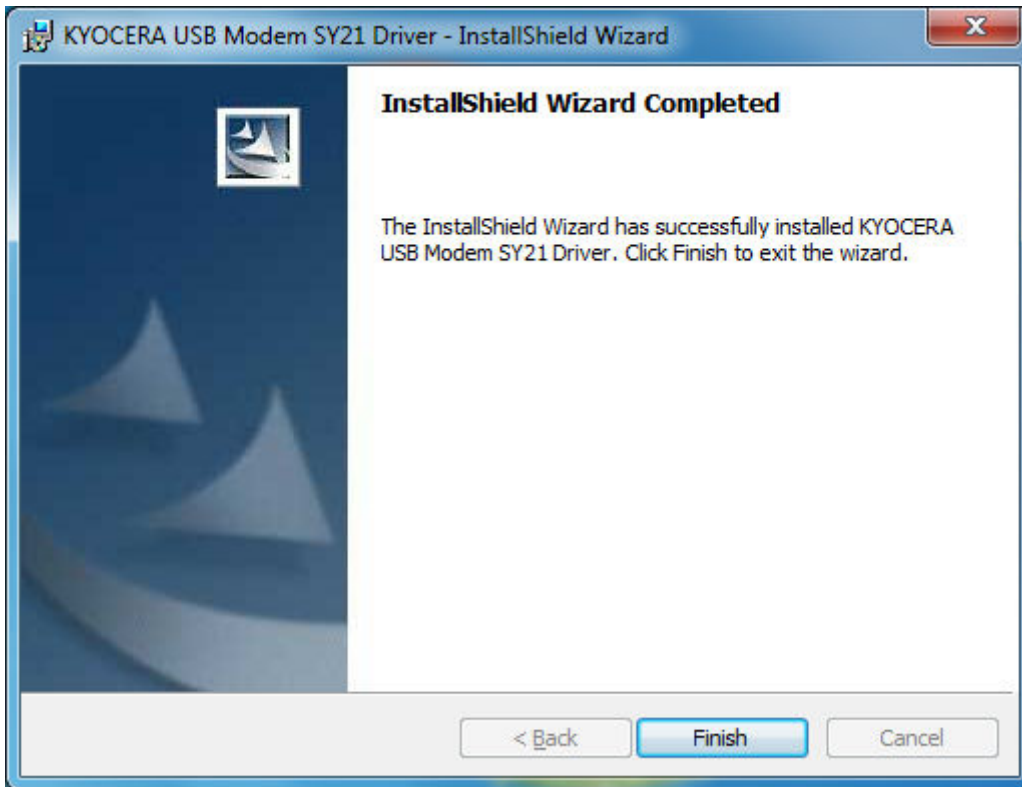


D) Press [Install] button.



E) Installation is completed when the dialog "InstallShield Wizard Completed" is displayed.

Press [Finish] button to continue procedure.



F) Connect the handset to USB port on the PC.

The handset will be recognized automatically by plug-and-play.

G) Installation is now completed.

*Confirm if the driver is working properly by Device Manager.

Press "Control panel"/"System"/"Hardware"/"Device Manager".

The followings will be added in the Device Manager lists.

USB controller-----KYOCERA USB Composite Device SY21.

Port----- KYOCERA USB Modem SY21 Diagnostic Serial Port (WDM)

Modem----- KYOCERA USB Modem SY21

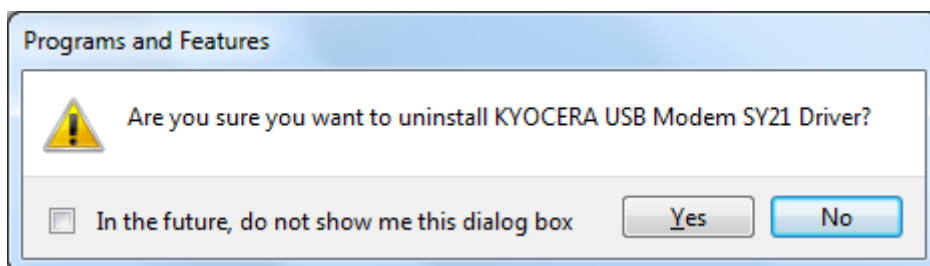
2. Uninstallation Procedure

*NOTE: The driver is common for SCP-3200, SCP-6650, SCP-7050, SCP-2500, SCP-8500, SCP-PRO200, SCP-PRO700, SCP-3800, SCP-6750, SCP-2700, SCP-6760, SCP-3810, SCP-6780, SCP-3820, E4100, S3015, SCP-PRO820 and SCP-PRO720 therefore if uninstall is performed all of these drive will be uninstalled.

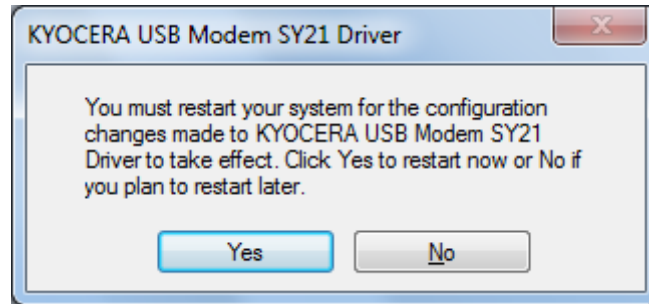
- A) Disconnect the handset from USB port on the PC.
- B) Uninstall Driver
Press "Control Panel"/"Add or Remove Programs"
If either "KYOCERA USB MODEM XXX SOFTWARE" or "KYOCERA USB MODEM XXX DRIVER" exists, press [Change/Remove].

*NOTE: either SY01, SY02, SY03, SY04, SY06, SY08, SY10, SY21 will be displayed on XXX.

- C) Press [Yes] button when "Uninstall Driver" dialog is displayed.



- D) When uninstallation is completed, the message to restart computer will be displayed, then press [Yes] button.



*NOTE: Please restart computer after uninstallation. Error could occur if driver is reinstalled without restart. Restart only once after all the drivers are uninstalled if few drivers need to be uninstalled.

Uninstallation is now completed.

3. Attention

*Please disconnect the handset from USB port on the PC before execute Installation/Uninstallation procedure.

Error could occur, if handset is connected to USB port.

*COM port number may vary depending on the handset.

The more increase the handset, the COM port is occupied as well.

If the COM port number is exceeded, please uninstall the unnecessary drives to release the COM port.