

SCP-8600 USB Driver Installation Procedure

For Driver version 0.02.000

Copyright ©2010 Kyocera Corporation.

Contents

1. USB driver(old version) uninstall procedure
2. USB driver install procedure
3. Connect SCP-8600 with PC
4. USB driver uninstall procedure

1. USB driver(old version) uninstall procedure

✧ Attention

Please operate the USB driver uninstall procedure, if your computer is already installed Old version USB driver by previous installer.

If your computer is not installed yet, go to “2. USB driver install procedure”.

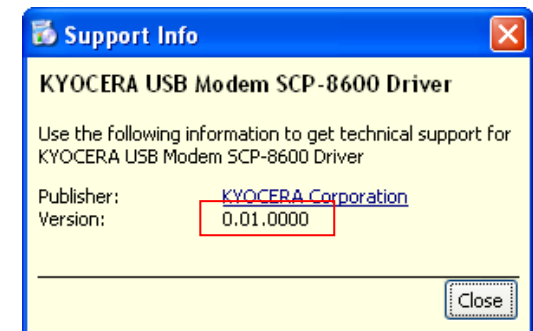
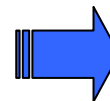
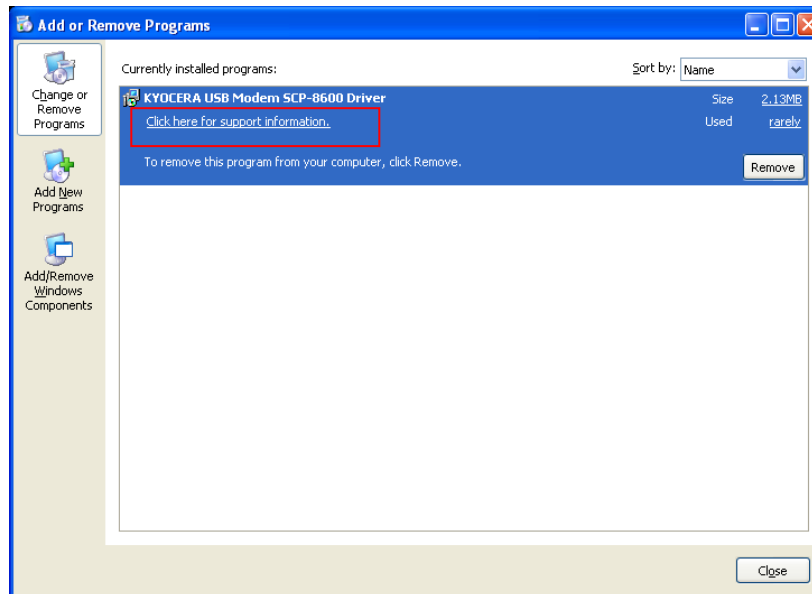
✧Attention

Do not connect SCP-8600 with PC.

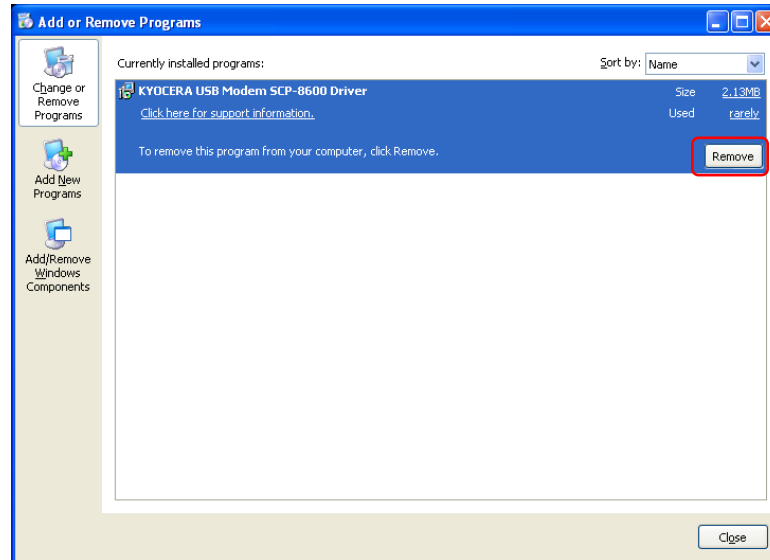
Step1. Please confirm the version of Driver.

Start Button of Windows ⇒ Control panel ⇒ Add or Remove Programs
⇒ Select “KYOCERA USB Modem SCP-8600 Driver “

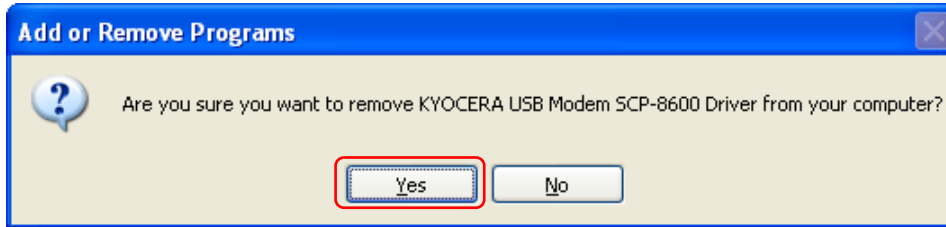
Please confirm version ”0.01.0000”.



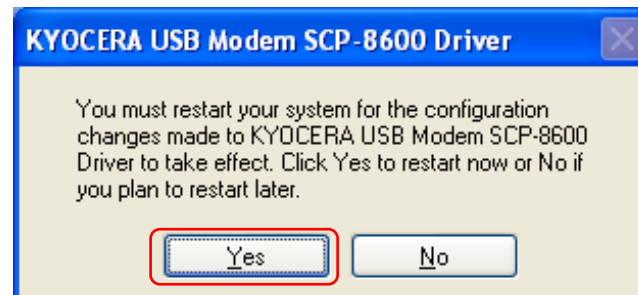
Step2. Click  Button.



Step3. Click  Button.



Step4. Click  Button. (Your computer is reboot)



2. USB driver install procedure

Step1. Double Click “scp8600_setup_x86.msi”(Icon).

[Folder]

/USB_Driver/ (OS) /

[File]

scp8600_setup_x86.msi



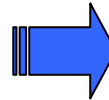
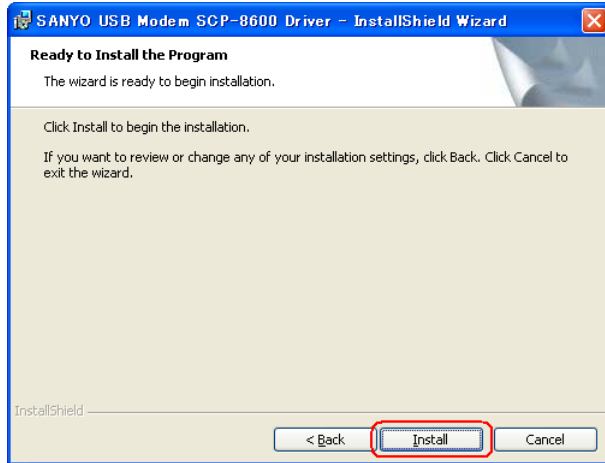
✧Attention

Do not connect SCP-8600 with PC during Step from 1 to 5.

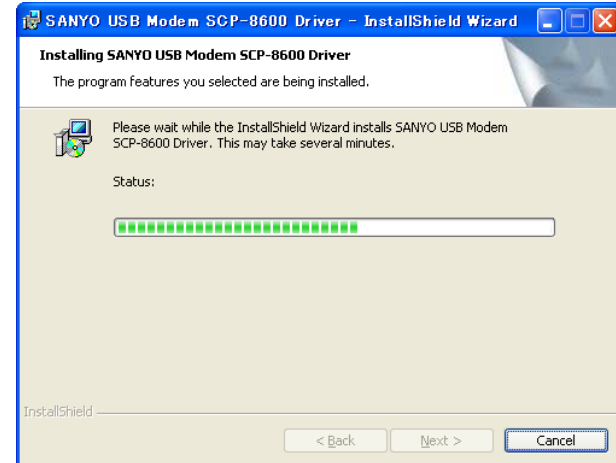
Step2. InstallShield Wizard is started. Click  Button.



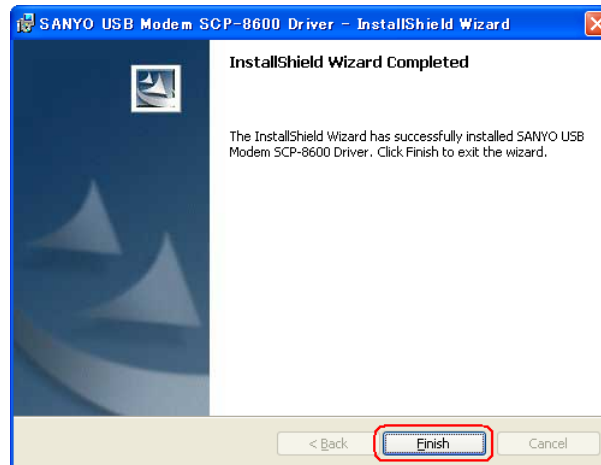
Step3. Click  Button.



<Install operation is started>



Step4. Click  Button.



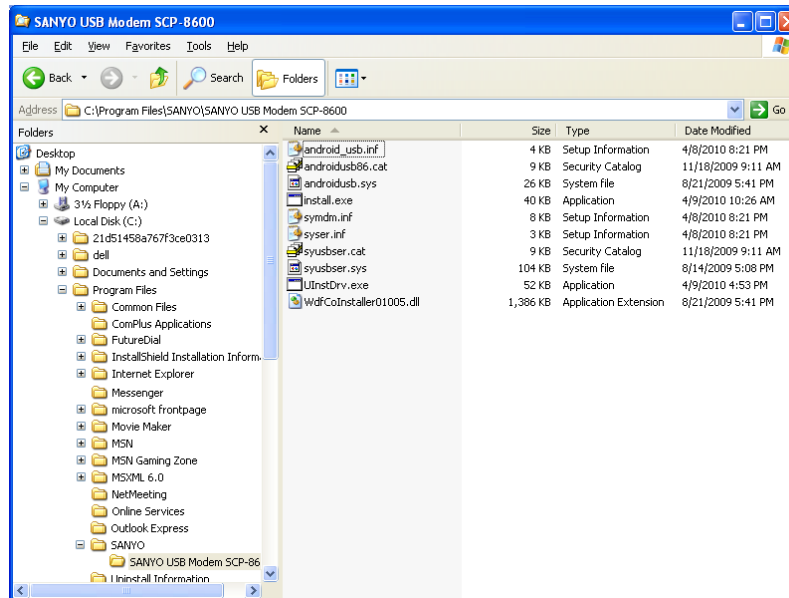
Step5. Please confirm whether there is the file of the folder as follows.

[Folder]

“(drive):/Program Files/SANYO/SANYO USB Modem SCP-8600”

[File]

Please confirm files in the following image.



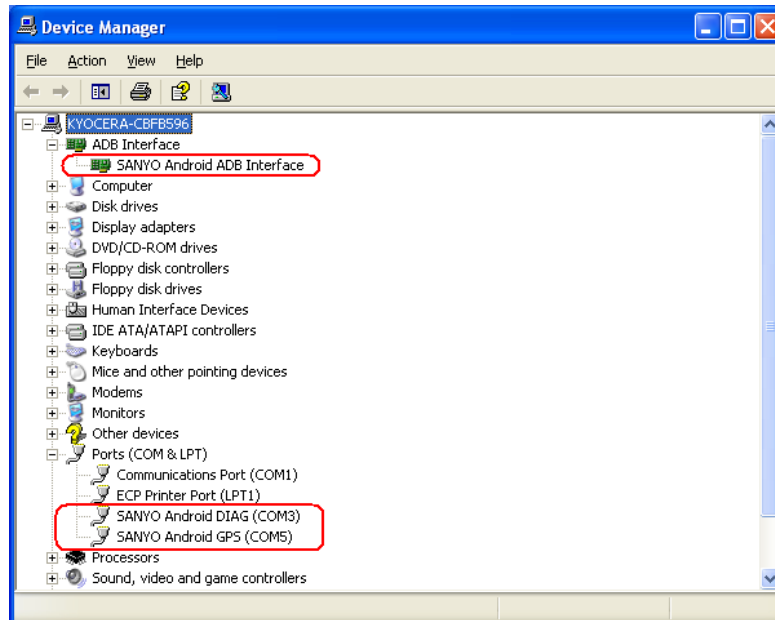
3. Connect SCP-8600 with PC

Step1. After power on SCP-8600, connect SCP-8600 with PC.

Step2. Install operation of USB Driver is started automatically.

Step3. Show Device Manager and check whether Android **ADB**, **DIAG** and **GPS** drivers are installed correctly.

Start Button of Windows ⇒ Control panel ⇒ System
 ⇒ Hardware Sheet ⇒ Device Manager

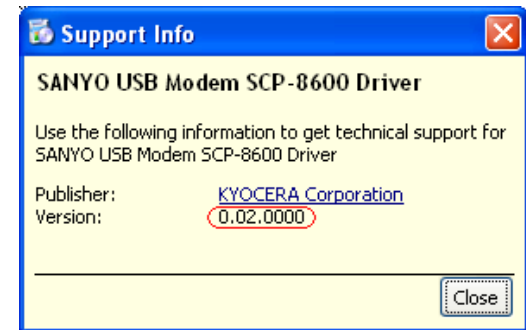
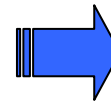
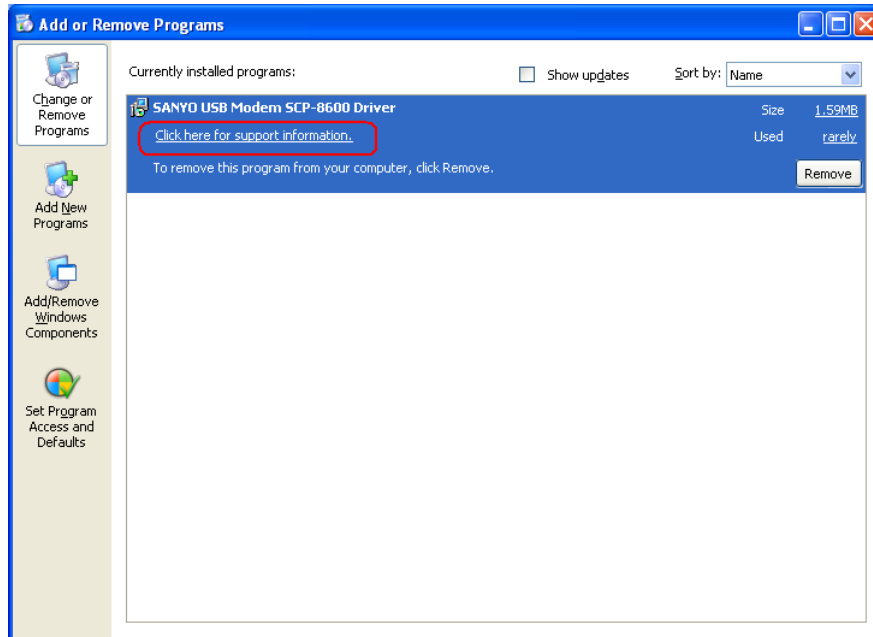


Step4. Please confirm the version of Driver.

Start Button of Windows ⇒ Control panel ⇒ Add or Remove Programs

⇒ Select “SANYO USB Modem SCP-8600 Driver “ ⇒ ”Click here for support information”

Please confirm version ”0.02.0000”.



4. USB driver uninstall procedure

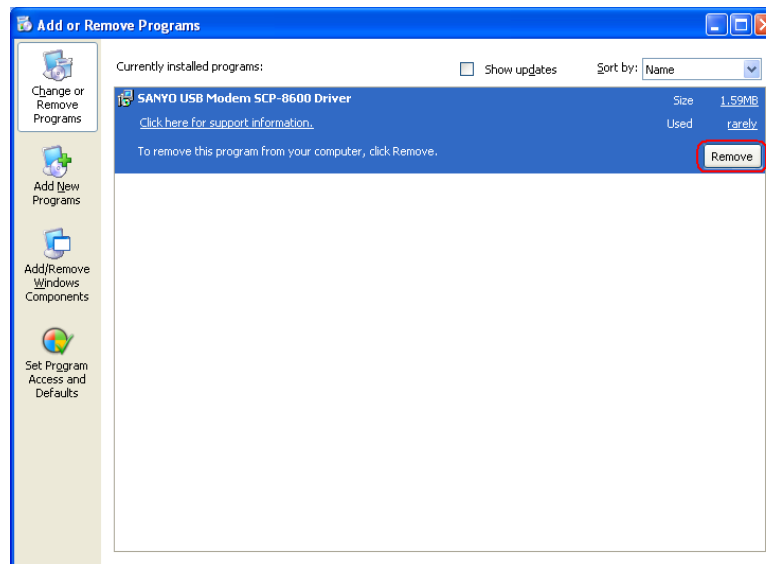
✧ Attention

Do not connect SCP-8600 with PC.

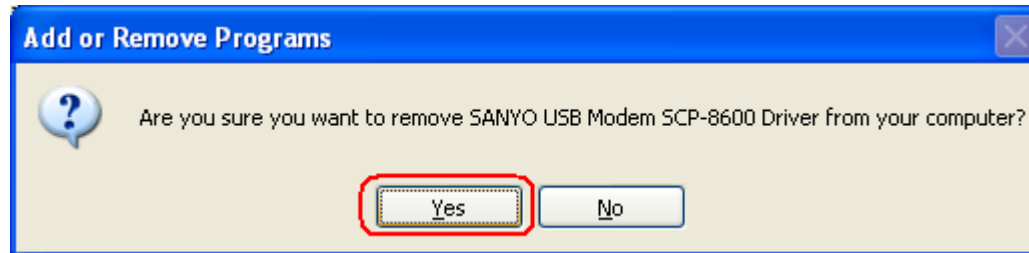
Step1. Remove program from PC.

Start Button of Windows ⇒ Control panel ⇒ Add or Remove Programs
⇒ Select “SANYO USB Modem SCP-8600 Driver “

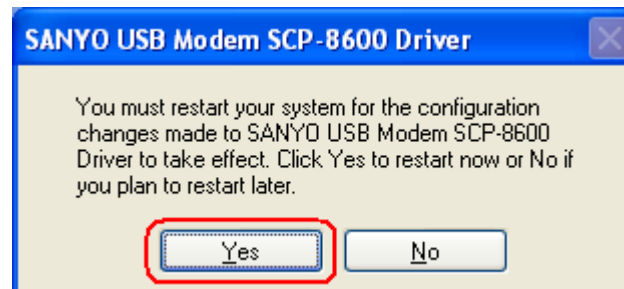
Step2. Click  Button.



Step3. Click Button.



Step4. Click Button. (Your computer is reboot)



Uninstall operation has been finished !!

Kyocera Corporation