

KPC-680 – Alltel Upgrade to OY 1.0.022



The Alltel RevA upgrade is only intended for users to upgrade their KPC-680 Express card from Version OY 1.0.01 or earlier to the EVDO RevA build OY 1.0.022. If your KPC-680 Express card already has OY 1.0.02 this update is not necessary.

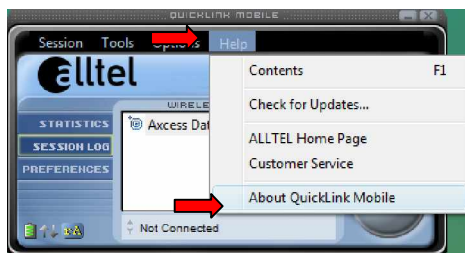
Prior to performing the Alltel firmware update, please verify the firmware version already installed onto your Alltel KPC-680 Express card.

View the current software version installed onto your Alltel KPC-680 Express card.

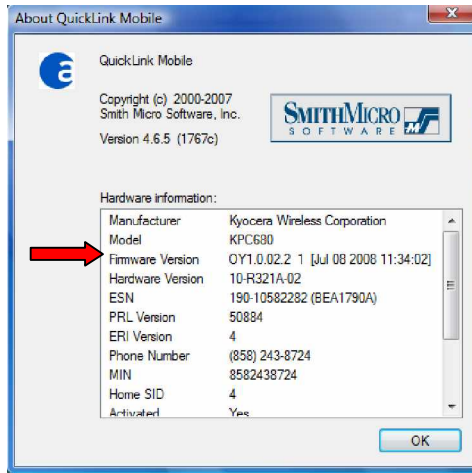
1. Launch Quick Link Mobile from the desktop.



2. Select the "Help" option from the top tool bar. Scroll down and select "About QuickLink Mobile"

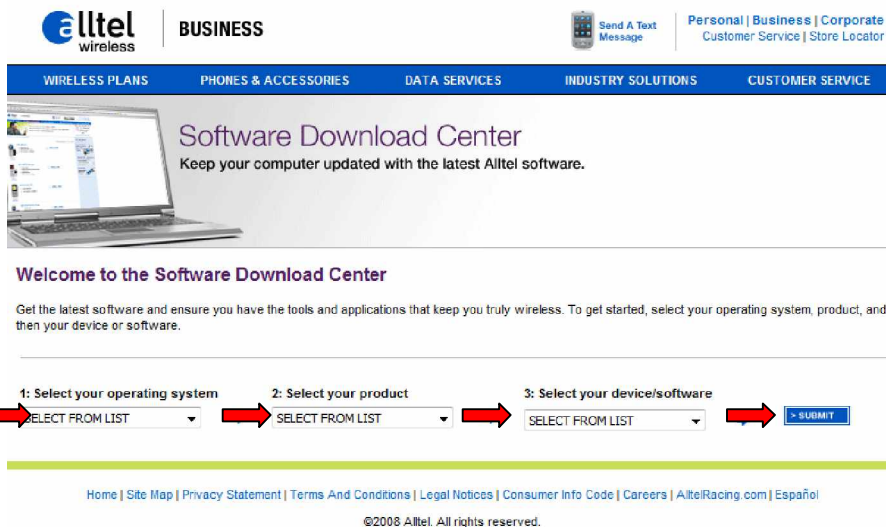


3. The “Firmware Version” will be listed within the “Hardware Information” window. If the firmware version listed is OY1.0.02.2 1 the user should perform the update to their KPC-680 express card.



Performing the firmware update

1. In order to upgrade the firmware on your Alltel KPC-680 the user will need to download the firmware from Alltel's Software Download Center. The KPC680 EVDO Rev A firmware will be located at <http://software.alltel.com/>.



2. Select your computer operating system from the drop down menu.

3. Select your product from the drop down list.
4. Select your device/software from the drop down list.
5. Click on "Submit".

alltel wireless | BUSINESS

Send A Text Message | Personal | Business | Corporate Customer Service | Store Locator

WIRELESS PLANS | PHONES & ACCESSORIES | DATA SERVICES | INDUSTRY SOLUTIONS | CUSTOMER SERVICE

Software Download Center

Keep your computer updated with the latest Alltel software.

Welcome to the Software Download Center

Get the latest software and ensure you have the tools and applications that keep you truly wireless. To get started, select your operating system, product, and then your device or software.

1: Select your operating system
Windows Vista (32-bit)

2: Select your product
Wireless Internet Cards

3: Select your device/software
Kyocera KPC680

SUBMIT

Home | Site Map | Privacy Statement | Terms And Conditions | Legal Notices | Consumer Info Code | Careers | AlltelRacing.com | Español

©2008 Alltel. All rights reserved.

6. The "Available Software" page will appear, select "Kyocera KPC680 EVDO RevA Firmware Update".

Software Download Center

Keep your computer updated with the latest Alltel software.

Available Software

Select which file you wish to download: << CHOOSE ANOTHER PRODUCT

	Date Updated	Software Name	Software Description	Device(s) Supported	Platforms	Version	
	03/13/2008	QuickLink Mobile Installer	This download includes the entire contents of the QuickLink Mobile installation CD. Once installed, you will have all the software and device drivers needed to access Alltel Wireless Internet on your computer.	Kyocera KPC680	Windows XP (SP2) Windows Vista (32-bit)	Version: 4.6.5	✓
	07/25/2008	Kyocera KPC680 EVDO Rev A Firmware Update	This executable will update your Kyocera KPC680 from EVDO Rev 0 to EVDO Rev A. Note: KPC680 must be plugged directly into your PC using the adapters provided by Alltel when you purchased the data card. Running this update through a USB hub or router will not succeed.	Kyocera KPC680	Windows XP (SP2) Windows Vista (32-bit)	Version: N/A Firmware: OY1.0.02.2	✓

✓ = Software is Recommended.

Please enter your mobile phone number below

Check your Alltel Wireless bill for a 10-digit phone number if you are unsure.

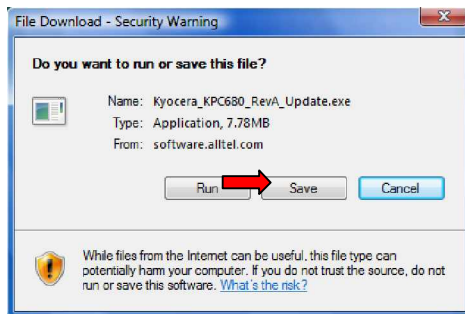
019 - 555 - 1212 **DOWNLOAD NOW**

Home | Site Map | Privacy Statement | Terms And Conditions | Legal Notices | Consumer Info Code | Careers | AlltelRacing.com | Español

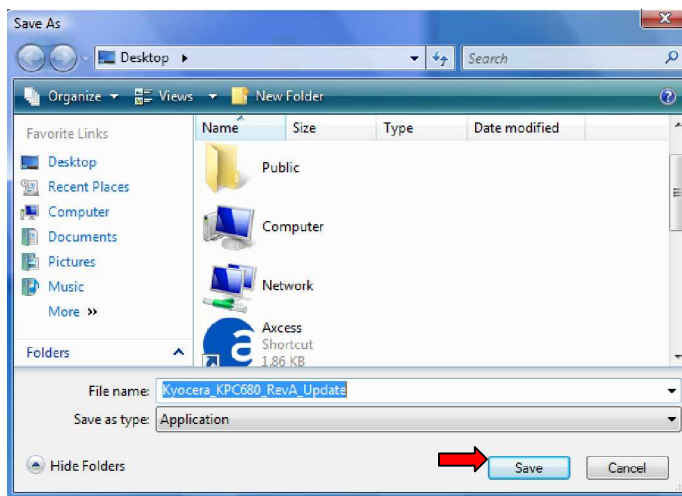
©2008 Alltel. All rights reserved.

7. Enter in your Alltel 10 digit mobile phone number.

8. Select "Download Now".
9. Select to either "Run" or "Save" the file. (In this example we will save the file.)



10. Select a location to save the file.



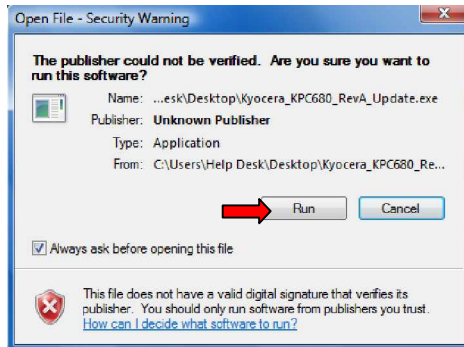
11. Insert your KPC-680 Express card into your PC. The KPC-680 must be plugged directly into your PC using the adapters provided by Alltel when you purchased the express card. Running this update through a USB hub or router will not succeed.



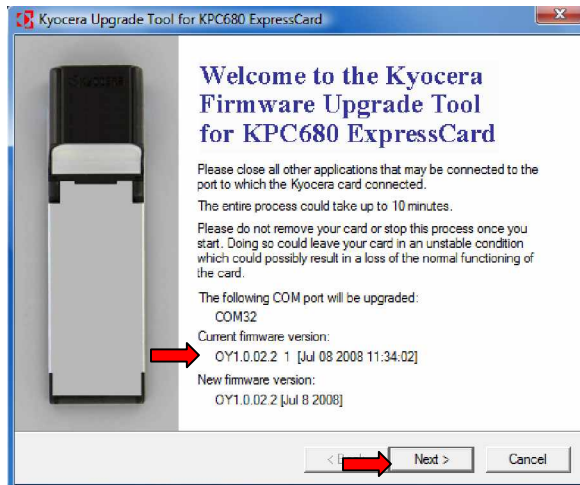
12. Locate the file on your computer and launch the executable file.



13. Open File Security Warning window will appear, select “Run” to launch and initiate the update process.



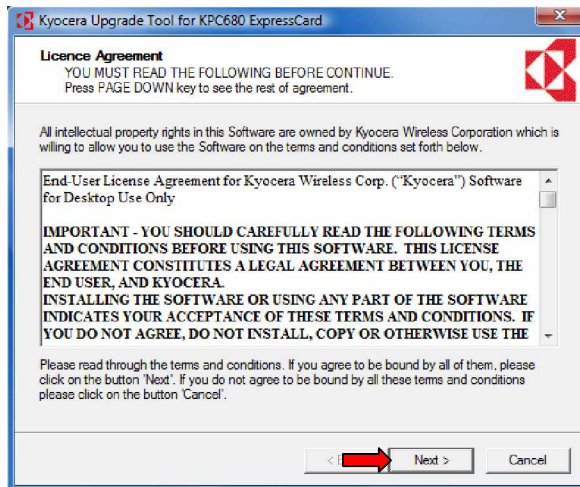
14. The “Welcome to the Kyocera Firmware Upgrade Tool for KPC680 Express Card” screen will appear. Follow the information listed in the window and Select “Next”.



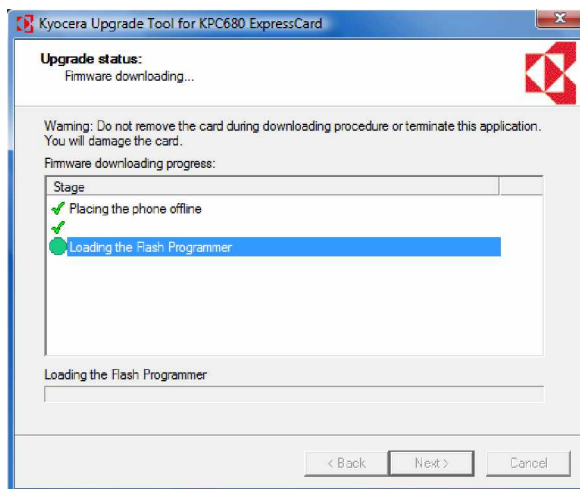
Caution: Please do not remove the card or stop the update process once it has started. Doing so could leave the card in an unstable condition, which could possibly result in a loss of the normal functioning of the card. The entire upgrade process should not take more then 10 minutes.

Note: Re-verify the cards current firmware version. Only KPC-680 cards with OY 1.0.01 should perform this update to the EVDO RevA build OY 1.0.022.

15. Read the License Agreement and select “Next” to continue.



16. The update will now start. Do not remove card during the entire process.



17. The “Firmware Upgrade Complete” window will appear indicating that the KPC-680 express card has been successfully completed. Select “Finish” to complete.

